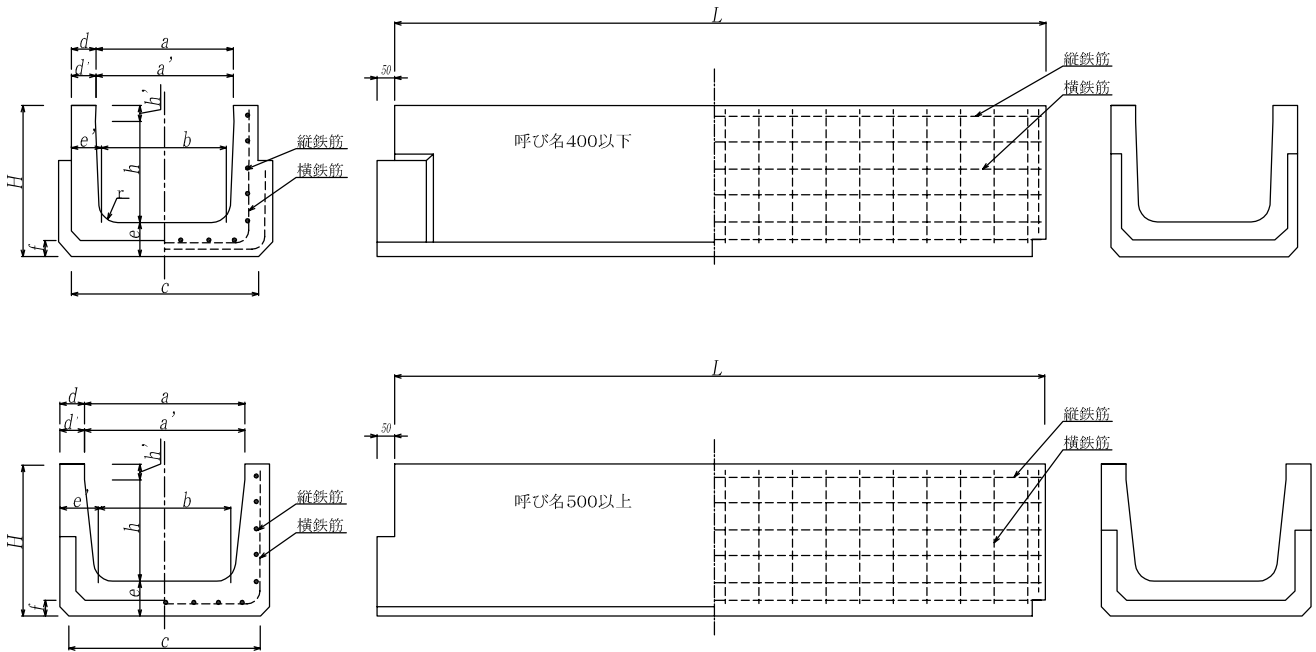


呼び名	重量(kg)	
	L=1000	L=2000
OF 200	130	260
OF 250	155	310
OF 300	180	360
OF 350	240	480
OF 400	285	570
OF 500	325	650
OF 600	415	830
OF 700	505	1010
OF 800	595	1190
OF1000	845	1690



呼び名	寸法 (mm)													
	a	a'	b	c	d	d'	e	e'	f	h	h'	H	r	L
OF 200	210	200	170	270	45	50	75	65	30	150	100	325	30	2000
OF 250	260	250	215	320			80	68		175		355		
OF 300	310	300	260	360			85	70		200		385		
OF 350	360	350	300	420	55	60	95	85	35	235	430	50		
OF 400	410	400	345	470	65	70	100	98	50	260	460	60		
OF 500	505	500	435	570	78	80	110	113	50	320	480	60		
OF 600	605	600	520	660			120	120	45	380	550			
OF 700	705	700	610	770	88	90	130	135	50	50	620	70		
OF 800	805	800	695	870			140	143			440		680	
OF1000	1005	1000	875	1080			98	100			150		163	

呼び名	鉄筋						
	横鉄筋		横鉄筋		補強鉄筋		
	径(mm)	本	径(mm)	本	径(mm)	本	
OF 200	D10	16	D6	8	D6	10	
OF 250		18				12	
OF 300		20				12	
OF 350	D13	14	D6	11	D6	10	
OF 400		16				10	
OF 500		18				12	
OF 600		20				14	
OF 700		22				16	
OF 800		24				18	
OF1000		24				13	18
		30				15	24